

Outside Edge Profiles

Inside Profiles

Panel Profiles

OP 30 Cove Edge



IP 10 Ogee



PP 20 Cove



OP 31 Beaded Edge



IP 13 Bead



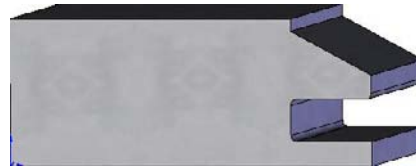
PP 22 Ogee



OP 35 Corner Round



IP 12 Chamfer



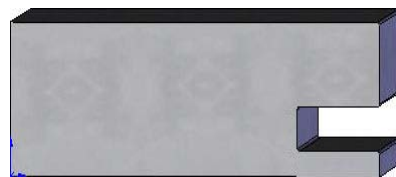
PP 23 Taper



OP 40 Ogee Edge(Half shoulder)



IP 11 T&G Shaker



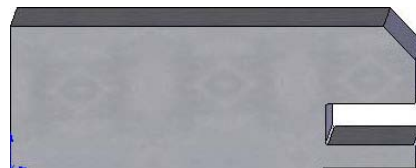
PP 24 Bubble



OP 34 Chamfer



IP 14 T&G Chamfer



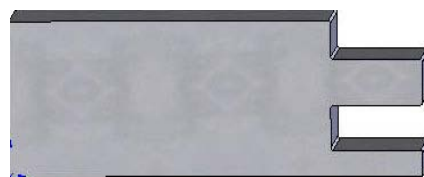
PP 25 Rev. Panel



OP 33 Crown Edge



IP 16 T&G Step



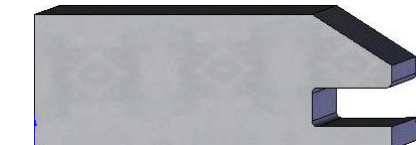
PP 26 V Grooves



OP 39 Straight Taper



IP12-A Chamfer no lip



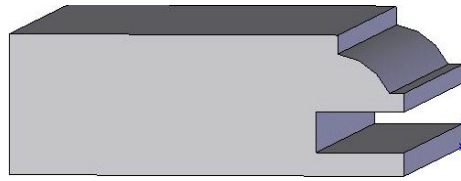
PP 27 Beaded Panel



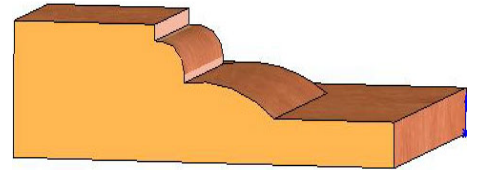
OP#41 Round Corner
1/8"R



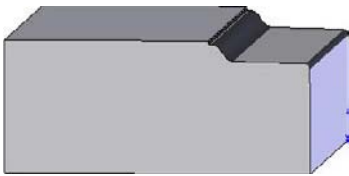
IP#33 Crown



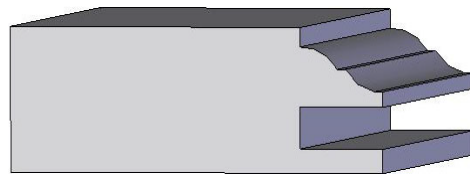
3 Steps RP



OP#44 Half Shoulder 2



IP#18 Cove & Bead



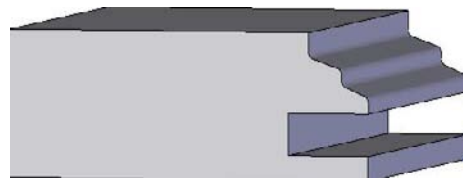
3/4" RP Cove Under Cut



OP#45 Doble Bead



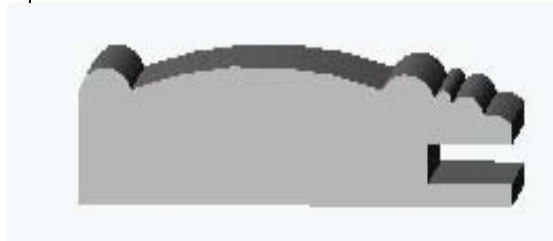
IP#19 3 Steps



3/4" RP Ogee Under Cut



Miter Door 3" Victoria Rail



3/4" RP Straight Taper U. Cut



Miter Drawer 1-3/4" Victoria Rail



3/4" Bubble RP Under Cut



[Miter Double Beads 2-3/8" Rail](#)



[Miter Bubble Rail 2-1/4"](#)



[MS 438 Miter 3-1/4"](#)

